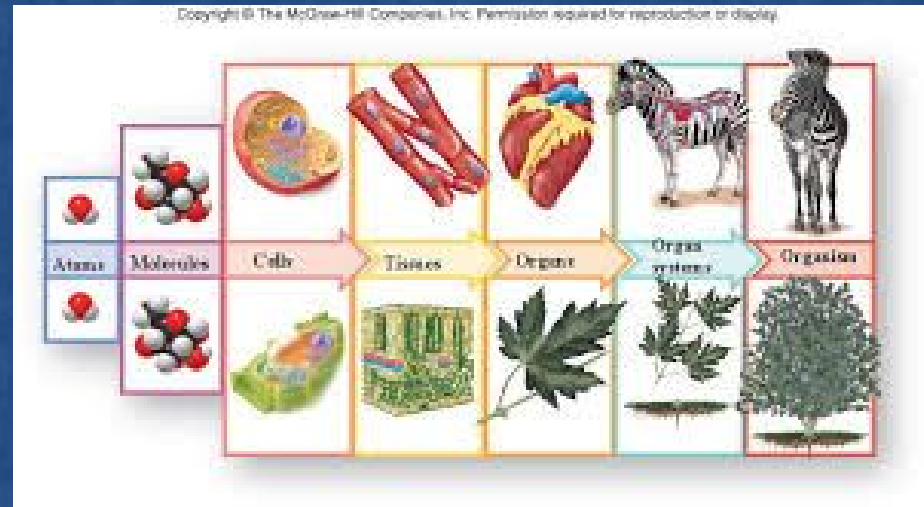
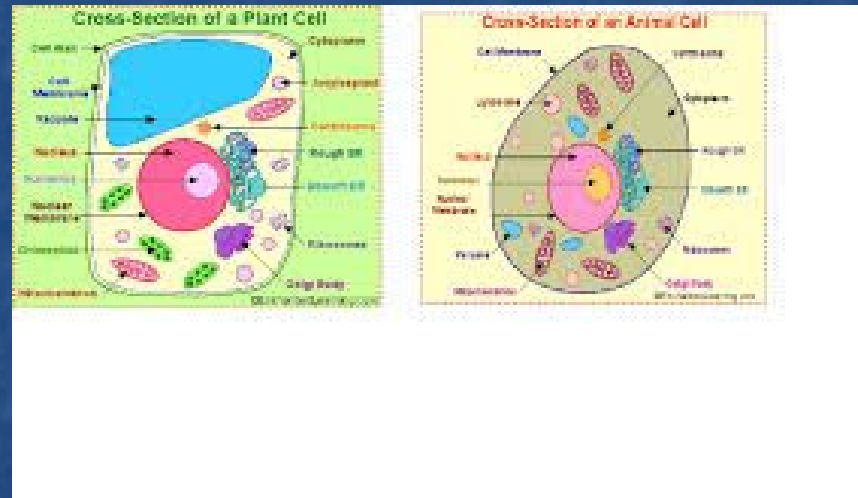


LEVELS OF ORGANIZATION



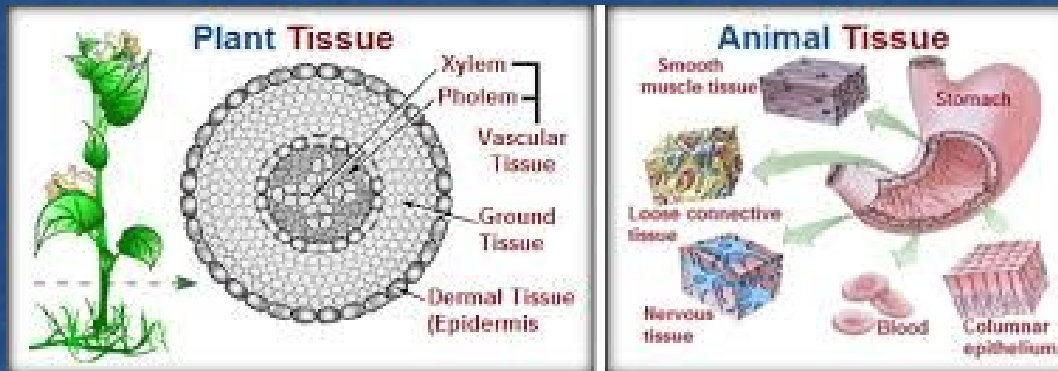
CELL

The **cell** is the basic structural and functional unit of all known living organisms. It is the smallest unit of life that is classified as a living thing



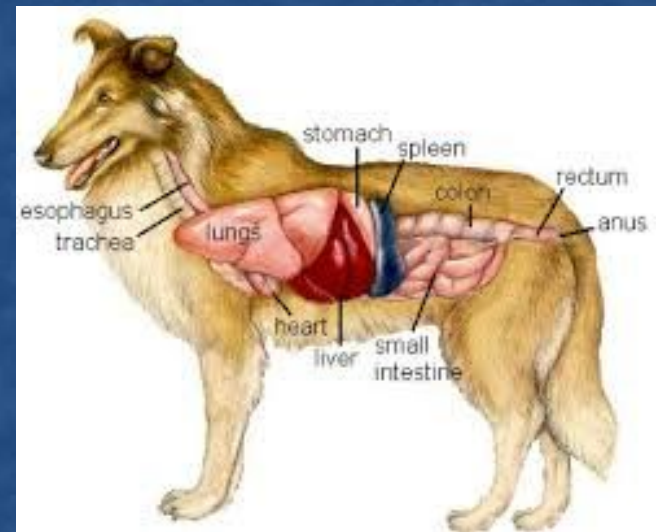
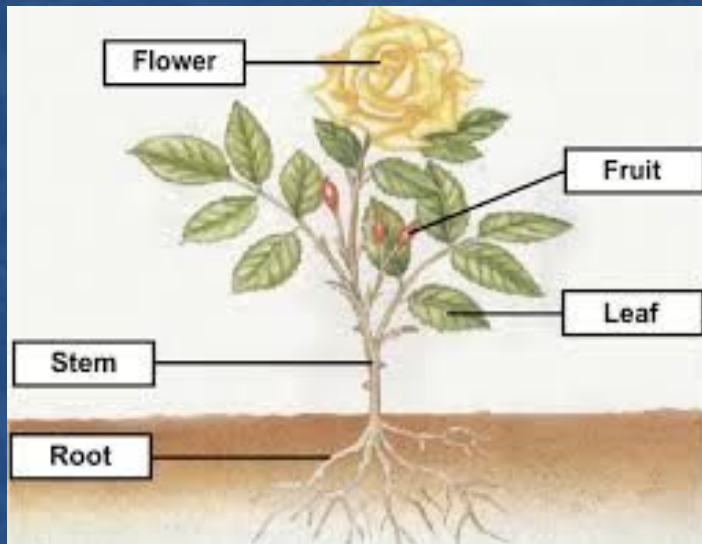
TISSUE

A tissue is a group of biological cells that perform a similar function



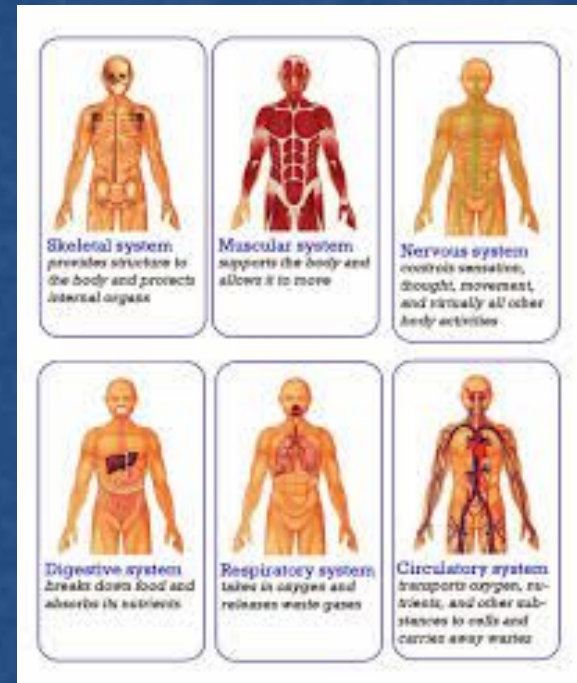
ORGAN

An **organ** is a collection of tissues joined in a structural unit to serve a common function



ORGAN SYSTEM

A biological system (or **organ system** or body system) is a group of organs that work together to perform a certain task



ORGANISM

An organism is a creature such as a plant, animal or a single-celled life form, or something that has interdependent parts and that is being compared to a living creature.

