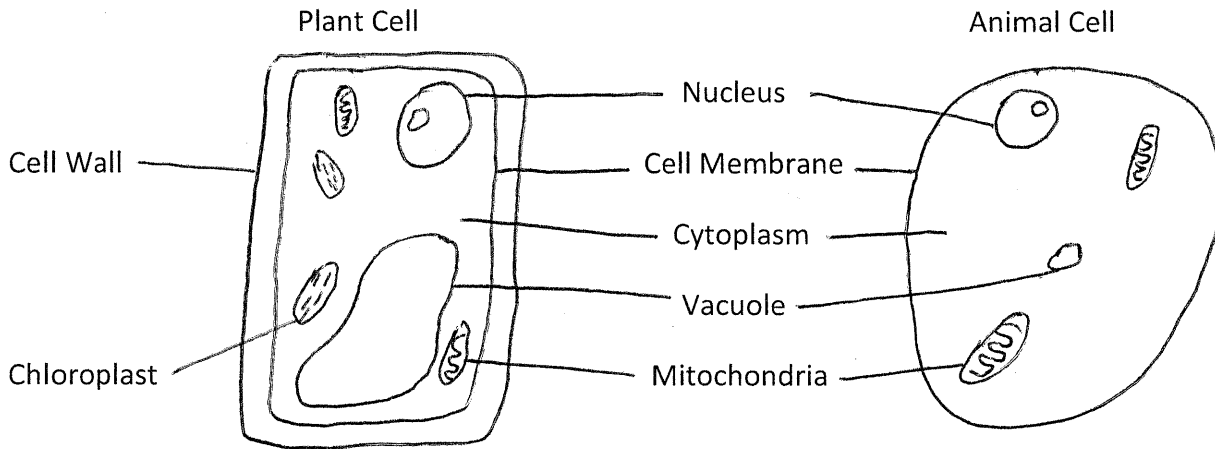


Review for Cell Test on Wednesday and Thursday



List the similarities and differences between plant and animal cells:

Similar: Nucleus, Cell membrane, Cytoplasm, vacuole, mitochondria
 Different: Cell wall, chloroplast, large vacuole

How do you know you are looking at a plant cell?

A cell wall, chloroplast, a larger vacuole

Name the three parts of the cell theory:

1. All living things are made up of 1 or more cells.
2. Cells are the basic unit of life.
3. New cells ~~are~~ come from old cells.

What do ALL cells have in common? This is tricky.....think!

Cell membrane

List the levels of organization of life in order starting with the smallest and give 5 examples of each.

Levels of organization go below this line.....				
1. cell	2. tissue	3. organ	4. organ system	5. organism
The five examples of each go below this line.....				
1. skin	1. muscle	1. lung	1. circulatory	1. human
2. blood	2. epithelial	2. kidney	2. respiratory	2. tree
3. fat	3. connective	3. stomach	3. skeletal	3. plants
4. nerve	4. nervous	4. heart	4. digestive	4. dog
5. muscle	5. skeletal	5. skin	5. nervous	5. bacteria